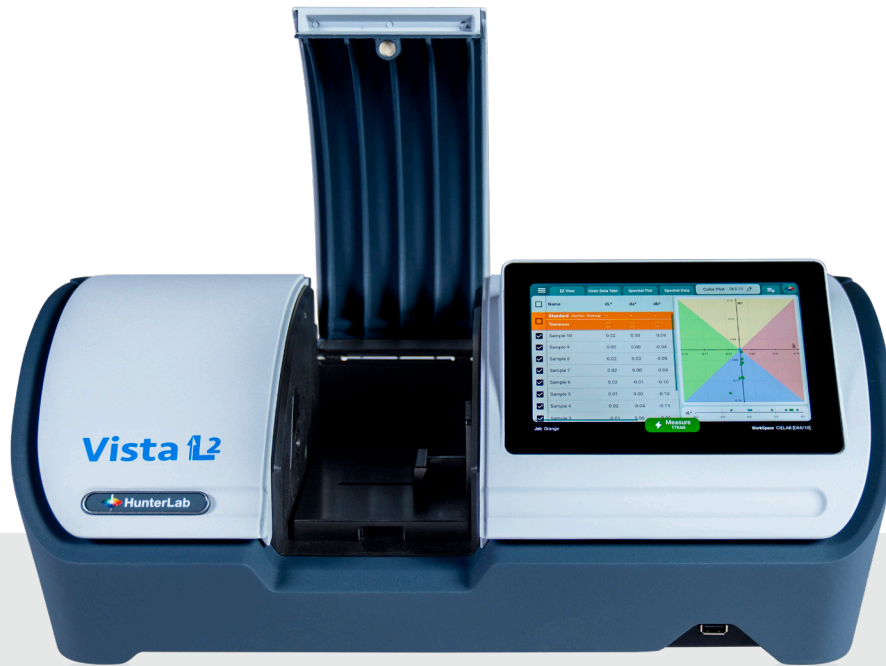


Compact
Powerful
Precise



Vista[®] L2

*Level up your clarity and color confidence with
Vista L2 Spectrophotometer.*

As simple as you want, as powerful as you need.

Measure color and haze in one step with a modern smart interface, a spill resistant sample compartment and built-in PC power and storage.

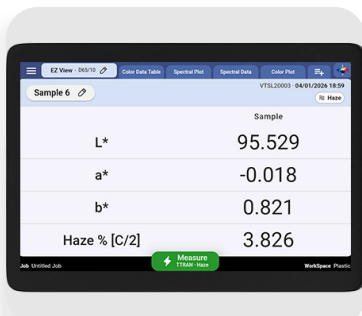


Explore the Next-Gen Vista®...L2

Built for efficiency, Vista L2 combines intuitive operation, low maintenance, and a compact footprint to simplify workflows, reduce costs, and ensure dependable performance every day.

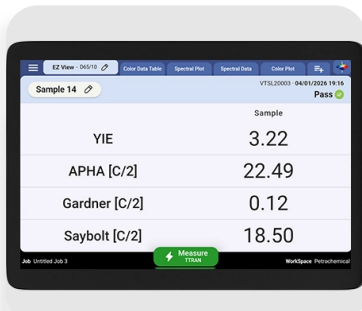


Explore all the additional features and benefits below.



Simultaneous Color and Haze Measurement

Faster Decisions and Simplified Workflows: Measures both transmission color and haze in one step, improving efficiency and reducing operator error while supporting better QC and QA outcomes.

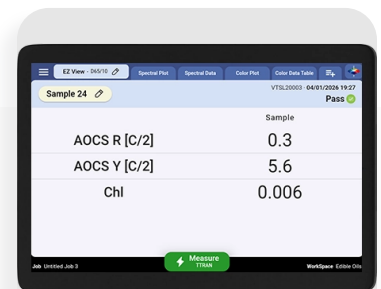


Wide Range of Color Scales and Indices

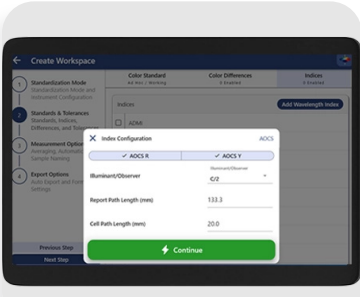
Flexible and Standards-Ready: Supports Pt-Co/Hazen/APHA, Gardner Color, Haze %, Opalescence, Y Total Transmission, Saybolt, Absorbance, CIE Spectral Data, LOVIBOND®, AOCS, Pharmacopoeia and many more to meet global industry requirements.

Advanced Chlorophyll Index at 710 nm

Improved Quality Insights: Enables better evaluation of oxidation and product stability, helping ensure longer shelf life and improved product quality in applications like edible oils.



- Spirits
- Vegetable Oil
- Food Dyes
- Water
- EDIBLE OILS
- Transparent Plastic Film
- BEVERAGES
- White Sugar
- Safflower Oil
- Shortening
- Olive Oil
- Transparent Sheet Plastic
- Colas/Syrups
- Fruit Juices
- PLASTIC



Flexible Pathlength Measurement

Accurate and Cost-Efficient: Delivers absolute color measurement using standard transmittance cells and vials from 10 mm to 50 mm, while automatically reporting 5.25 inch or 1 inch pathlengths — eliminating the need for expensive, hard-to-clean specialty cells, especially for edible oil and fat analysis.

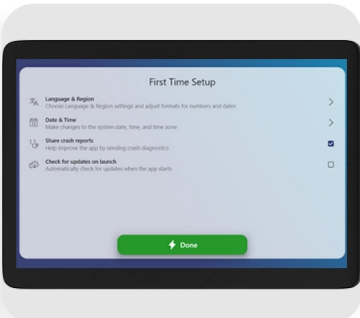
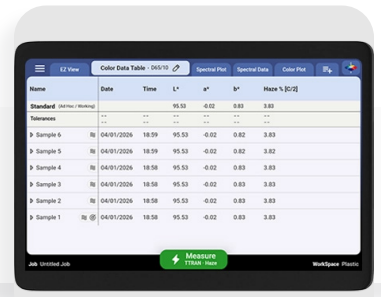


Modern Smart User Interface with Touchscreen and Color Display

Durable and Efficient: Facilitates accurate color analysis in minutes with an intuitive interface and robust industrial glass design suitable for demanding environments.

Simplified Operator Experience with Essentials L2 Software

Reliable and User-Friendly: Provides fast access to critical color data with enhanced usability, improving productivity and decision-making with minimal training.



Self-Guided Out-of-Box Startup

Time-Saving and Easy to Use: Integrated setup wizard enables quick training and immediate operation, reducing on-boarding time and operator dependency.



Powerful Standalone Functionality

No Computer Required: Functions as a fully self-contained color workstation with powerful on-board processing and storage, enough for 4 million measurements. No external PC required for measurement, analysis, data storage, or reporting.

Transparent Sheet Plastic
Clear Liquid Detergent

CHEMICALS
Coconut Oil

Petrochemicals
Sports Drinks
FOOD

Palm Oil
Functional Beverages

Tea Drinks
Citrus Juice



Advanced Data Export and Communication

Seamless Connectivity: Features USB ports, HDMI, and peripheral support for easy data export, printing, reporting, and integration into existing workflows.

Connectivity with LIMS and SPC systems

Simplifies QC Workflows: Enables trend analysis and centralized data management across manufacturing sites for improved process control.



Compact and Spill-Resistant Design

Built for Production Environments: Small footprint saves bench space while spill-resistant sample compartment protects internal components and ensures long-term reliability.

CONTACT US

We've worked with thousands of companies, but you'll feel like our one and only. If color accuracy is crucial to your business, you've come to the right place—with the right people. Let's get in touch. Ask a question, Request a quote or just say hello!

OUR OFFICES & DISTRIBUTION CENTERS

HunterLab

11491 Sunset Hills Road
Reston, VA 20190-5280
Website: www.hunterlab.com
Email: sales@hunterlab.com
Ph: 703-471-6870
Fax: 703-471-4237

Corporate Headquarters

HunterLab Europe

Christian Jansen, Managing Director
Dr.-August-Einsele-Ring 15
82418 Murnau, Germany
Website: www.hunterlab.com
Email: sales@hunterlab.de
Ph: +49 8841 9464

European Office

HunterLab Asia-Pacific

Heng Su Kiang, APAC Sales Manager
28-2, Plaza KLTS
No. 99, Jalan Gombak
Setapak
53000 Wilayah Persekutuan Kuala Lumpur
Malaysia
Website: www.hunterlab.com
Email: sales-asiapacific@hunterlab.com
Ph: +(60) 340 324 749

HunterLab Asia-Pacific

Leo Cheung, Regional Manager
Flat E, 13F Leahander Centre
28 Wang Wo Tsai Street Tsuen Wan
New Territories Hong Kong
Website: www.hunterlab.com
Email: sales-asiapacific@hunterlab.com
Ph: +852-2406 1723

Asia-Pacific Offices

For more information, please contact HunterLab at 703-471-6870, sales@hunterlab.com or visit www.hunterlab.com